

# TransCore® Slap & Track™

Trailer Tracking

powered by  
**GlobalWave®**

## Track and monitor trailers in real time, to protect your assets

TransCore's Slap & Track™ is a rugged, compact, 100% satellite terminal easily mounted on loaded or empty trailers to track assets anywhere in North America – with no dead spots. Providing up to five years of battery life, Slap & Track communicates critical location information to you and your customers via a web interface any time you want.

**Prevent loss and theft.** Slap & Track eliminates the worry and expense of retrieving trailers that have been lost due to error, driver neglect or theft. Find stolen or misplaced trailers anywhere in North America, within 30 minutes or less.

**Improve asset management.** Slap & Track delivers precise location reports on schedule or on demand, so dispatchers can assign routes efficiently without time-consuming yard checks or driver check calls. Analyze tractor-to-trailer ratios, and adjust them for maximum effectiveness.

**Removable battery lasts five years.** Replaceable battery packs optional. Thanks to intelligent power management, batteries last up to five years with normal use (see reverse page). On units featuring a removable battery pack, the battery can be replaced quickly and easily, without breaching the unit's electronics or removing the mobile terminal itself.

**Install in 15 minutes, configure remotely.** Slap & Track installation takes less than 15 minutes, whether the trailer is loaded or empty.

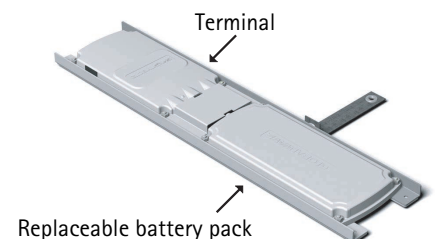
**Integrates with major dispatch software** such as ICC, Maddocks, McLeod and TMW.

**Add revenue sources.** Use data from Slap & Track to assess detention billing and other value-added services that meet customer demands for just-in-time delivery and inventory control.

## Slap & Track™



- 100% satellite coverage, with no dead spots in North America
- Low-profile terminal installs in less than 15 minutes, on empty or loaded trailer
- Battery lasts up to five years with normal use.\* **NEW!** Replaceable battery pack available.
- **NEW!** Stop/start sensor for automatic arrival/departure reports, longer battery life.



# TransCore® Slap & Track™

Trailer Tracking

powered by  
**GlobalWave®**

## Product Profile

Low-profile unit tolerates extreme conditions. The Slap & Track Mobile Terminal is a single, integrated unit that includes batteries and an antenna. (Batteries are replaceable on some models.) The low-profile package is less than an inch high, so it is inconspicuous when installed on the roof of a trailer or shipping container. Designed for rugged automotive use in all weather conditions, Slap & Track operates normally within temperature ranges from -104° (below zero) up to 185° Fahrenheit (-40° to +85° Centigrade.)

### REPORTING

Slap & Track produces four types of reports:

1. Polls for real-time GPS location
2. Pre-scheduled, configurable reports at your choice of intervals
3. Temperature-and-battery event-based reports when parameters exceed user-defined thresholds
4. **NEW!** Automatic stop and start detection and notification, configurable over the air

### POWER

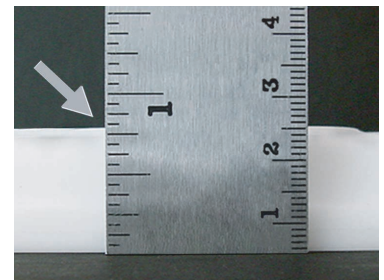
**NEW!** Removable lithium battery pack can be replaced without opening the sealed mobile terminal unit. Battery pack lasts up to five years.\*

### MODELS AVAILABLE

MT3300 and MT3400 (with replaceable battery pack) mobile terminals.

\*One report per day, with a 30-minute wake-up cycle per report, 2 per cent unit blockage, and the device reverting to battery-conserving "sleep" mode between reports. Users can set Slap & Track to wake up, locate, and report within 60 seconds, but this rapid-response mode, if used repeatedly, will impact battery life.

Figure 1 Low Profile



Low profile of 0.8 inches allows the Slap & Track Mobile Terminal to be mounted almost anywhere.

For product information call: **United States:** TransCore, 1.800.529.7634 Fax 800.280.2465  
**Canada:** TransCore Link Logistics, 1.888.844.8725 x 2 Fax 905.795.0539  
**Outside United States and Canada:** 1.972.387.8197 Fax 1.972.733.6486

email: [inquiries@transcoretracking.com](mailto:inquiries@transcoretracking.com)

[www.TransCoreTracking.com](http://www.TransCoreTracking.com)